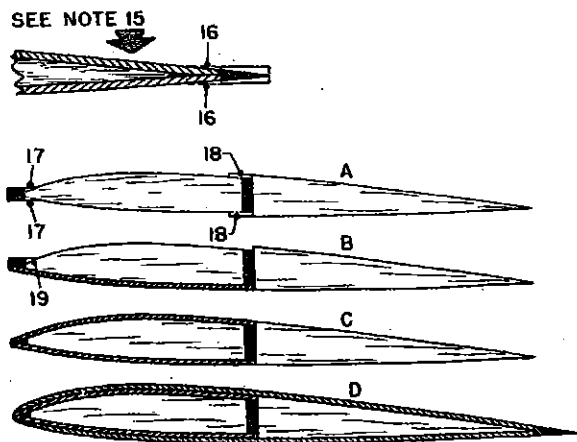
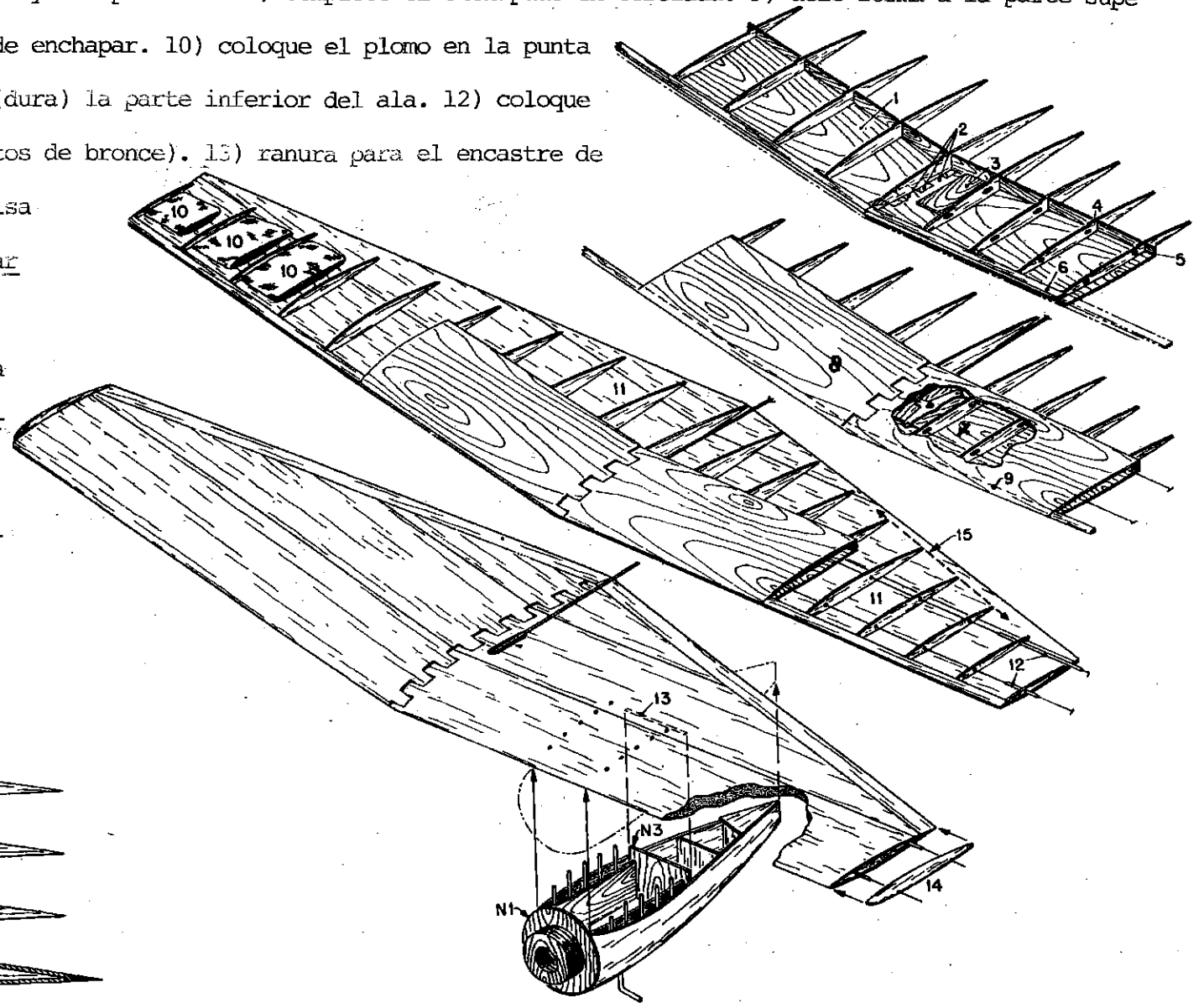
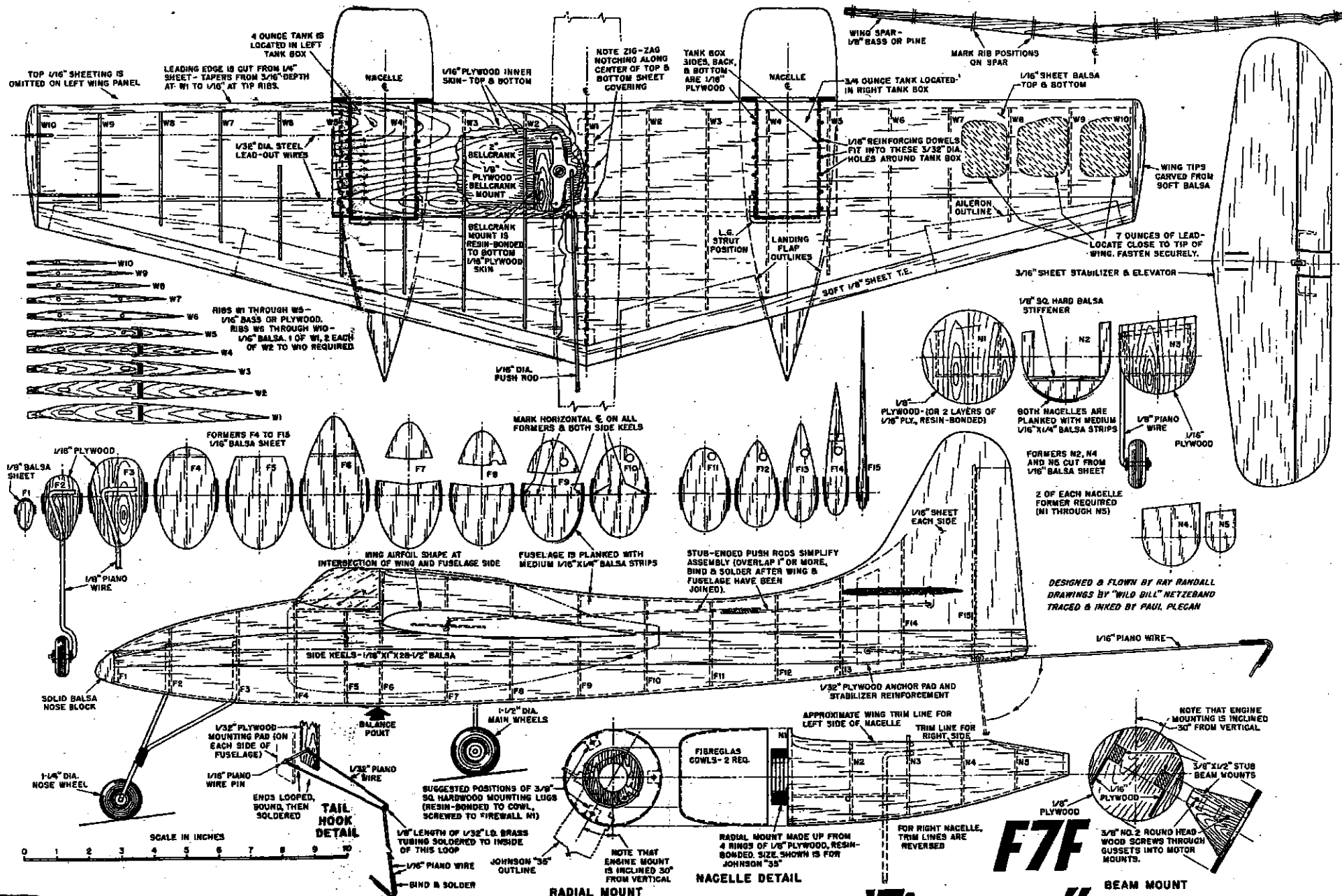


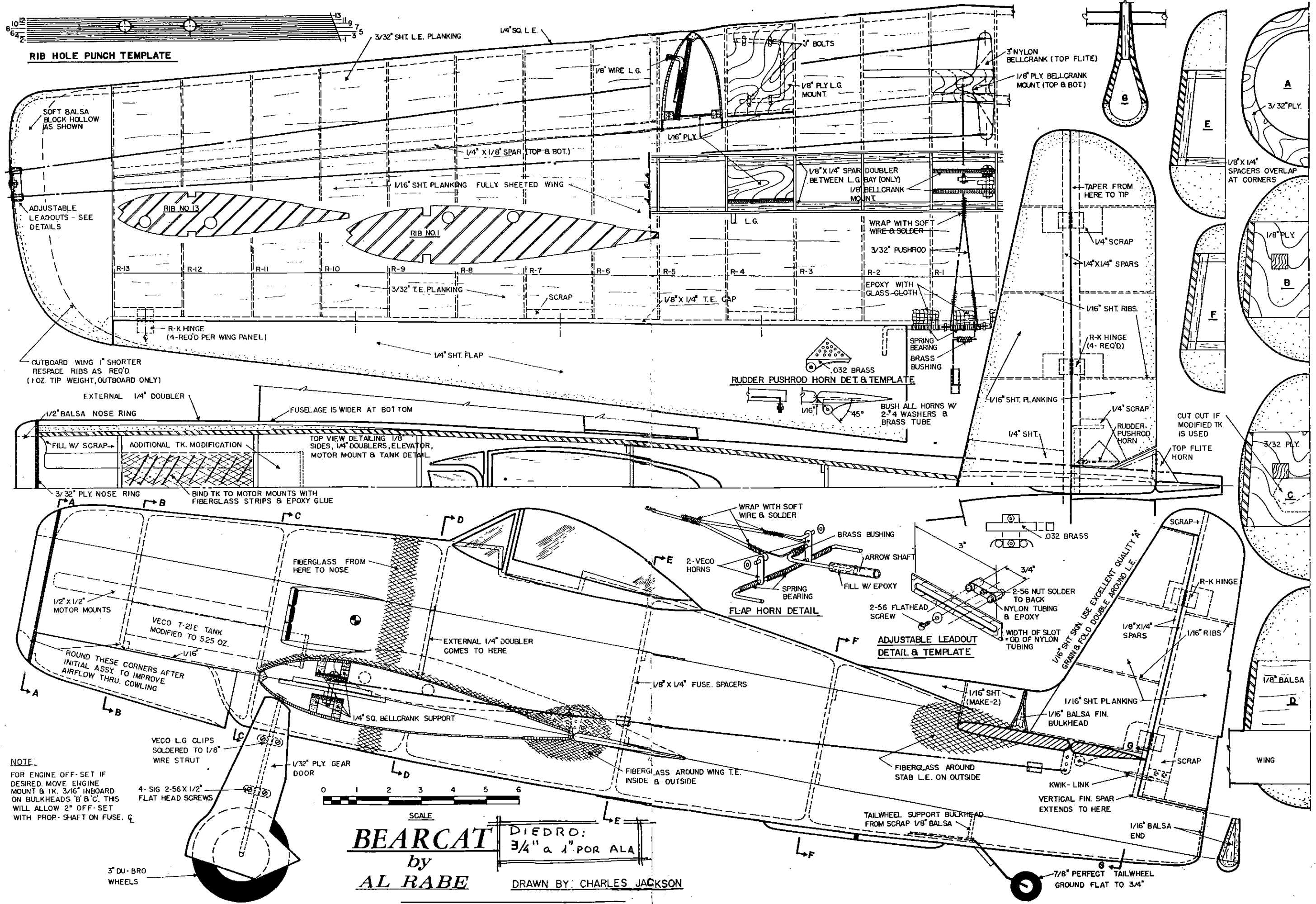
1) fondo en terciada de 1/16". 2) note el encastre en la línea central debido al diedro. 3) la plataforma del balancín apoya en el fondo de terciada. 4) remueva el exceso hasta llegar al larguero (ver 18). 5) la terciada y el larguero se extienden 6 mm después de la costilla número 5. 6) déle forma al borde de ataque antes de pegarlo. 7) asegure el balancín con los cables de salida y el "push rod" 8) complete el enchapado en terciada. 9) déle forma a la parte superior del borde de ataque antes de enchapar. 10) coloque el plomo en la punta del ala. 11) enchape con balsa (dura) la parte inferior del ala. 12) coloque las guías para los cables (tubitos de bronce). 13) ranura para el encastre de N3. 14) Bordes marginales en balsa 15) el borde de fuga no lleva larguero. 16) detalle del borde de fuga. 17) exceso que facilita la construcción, luego recortar: ver pasos A,B,C y D. 18) dejar este exceso hasta que la junta con el larguero esté seca y fuerte.





La Manija

"Tigercat"



RIB HOLE PUNCH TEMPLATE

SOFT Balsa BLOCK HOLLOW AS SHOWN

ADJUSTABLE LEADOUTS - SEE DETAILS

OUTBOARD WING 1" SHORTER RESPACE RIBS AS REQ'D (1 OZ TIP WEIGHT, OUTBOARD ONLY)

EXTERNAL 1/4" DOUBLER

1/2" Balsa NOSE RING

FILL W/ SCRAP

ADDITIONAL TK. MODIFICATION

TOP VIEW DETAILING 1/8" SIDES, 1/4" DOUBLERS, ELEVATOR, MOTOR MOUNT & TANK DETAIL

3/32" PLY NOSE RING

BIND TK TO MOTOR MOUNTS WITH FIBERGLASS STRIPS & EPOXY GLUE

FIBERGLASS FROM HERE TO NOSE

1/2" x 1/2" MOTOR MOUNTS

VECO T-21E TANK MODIFIED TO 525 OZ.

ROUND THESE CORNERS AFTER INITIAL ASSY TO IMPROVE AIRFLOW THRU. COWLING

EXTERNAL 1/4" DOUBLER COMES TO HERE

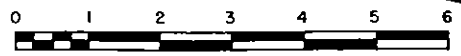
VECO L.G CLIPS SOLDERED TO 1/8" WIRE STRUT

1/32" PLY GEAR DOOR

FIBERGLASS AROUND WING T.E. INSIDE & OUTSIDE

TAILWHEEL SUPPORT BULKHEAD FROM SCRAP 1/8" Balsa

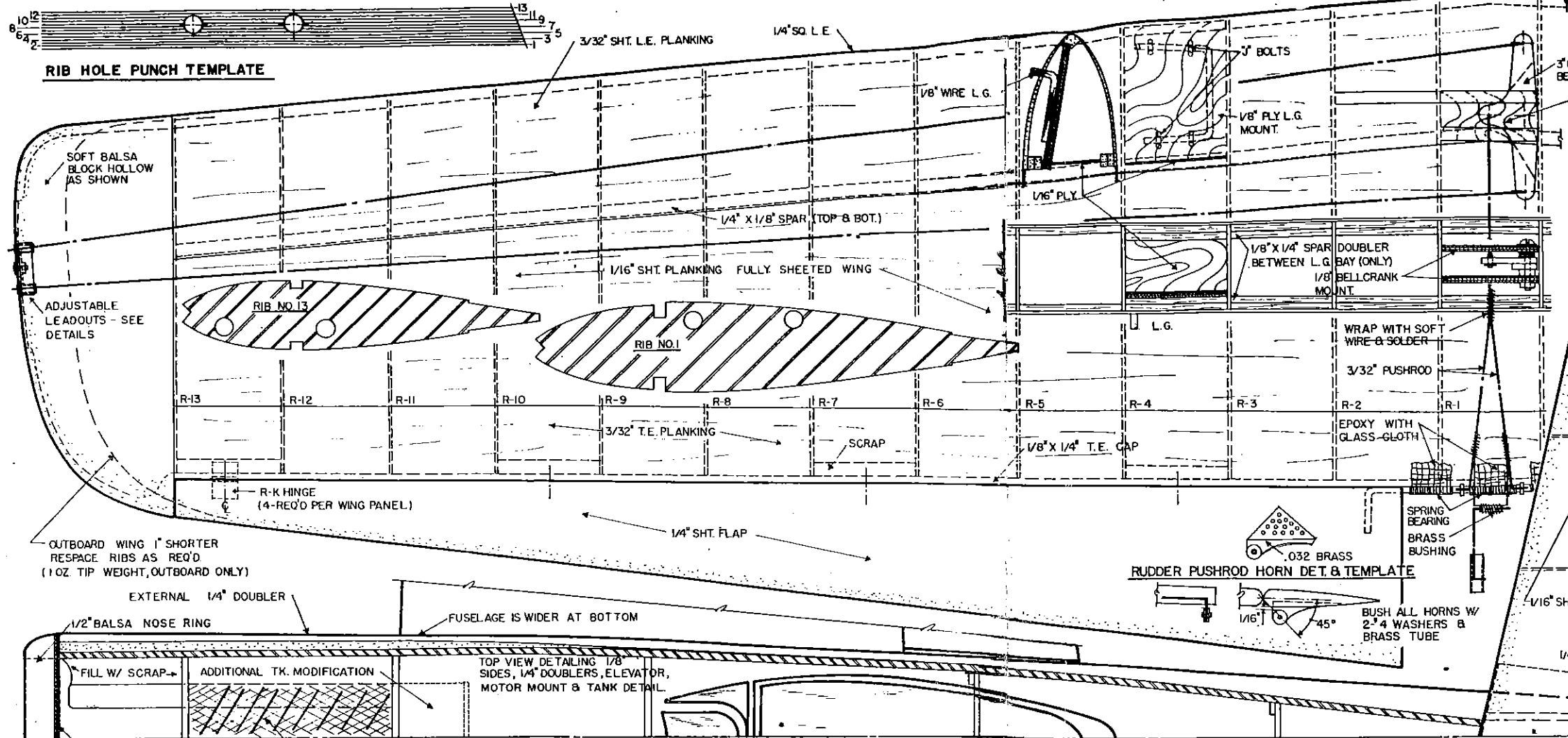
3" DU-BRO WHEELS



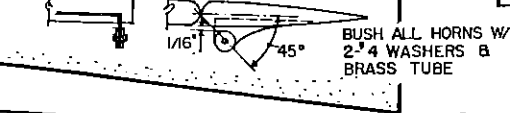
BEARCAT
by
AL RABE

DIEDRO:
3/4" a 1" POR ALA

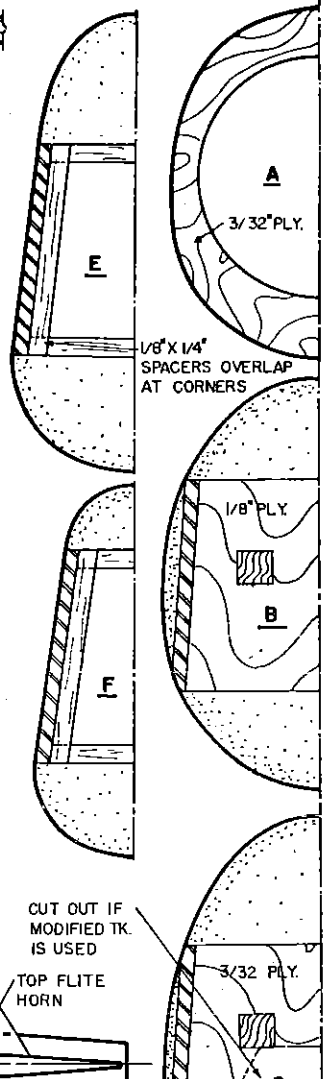
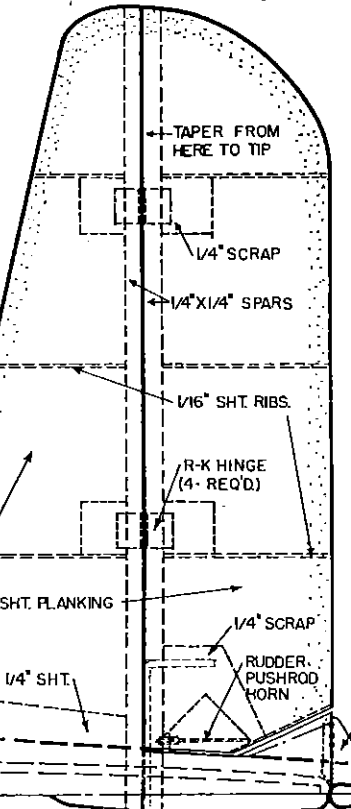
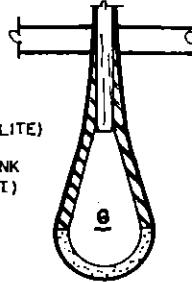
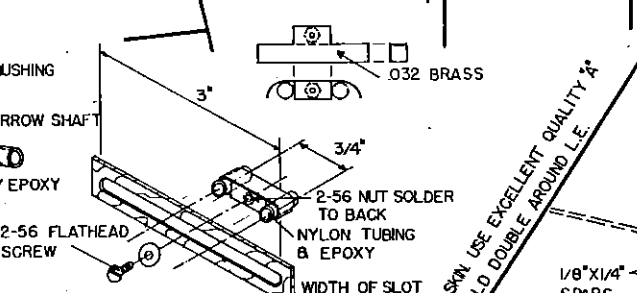
DRAWN BY: CHARLES JACKSON



RUDDER PUSHROD HORN DET. & TEMPLATE



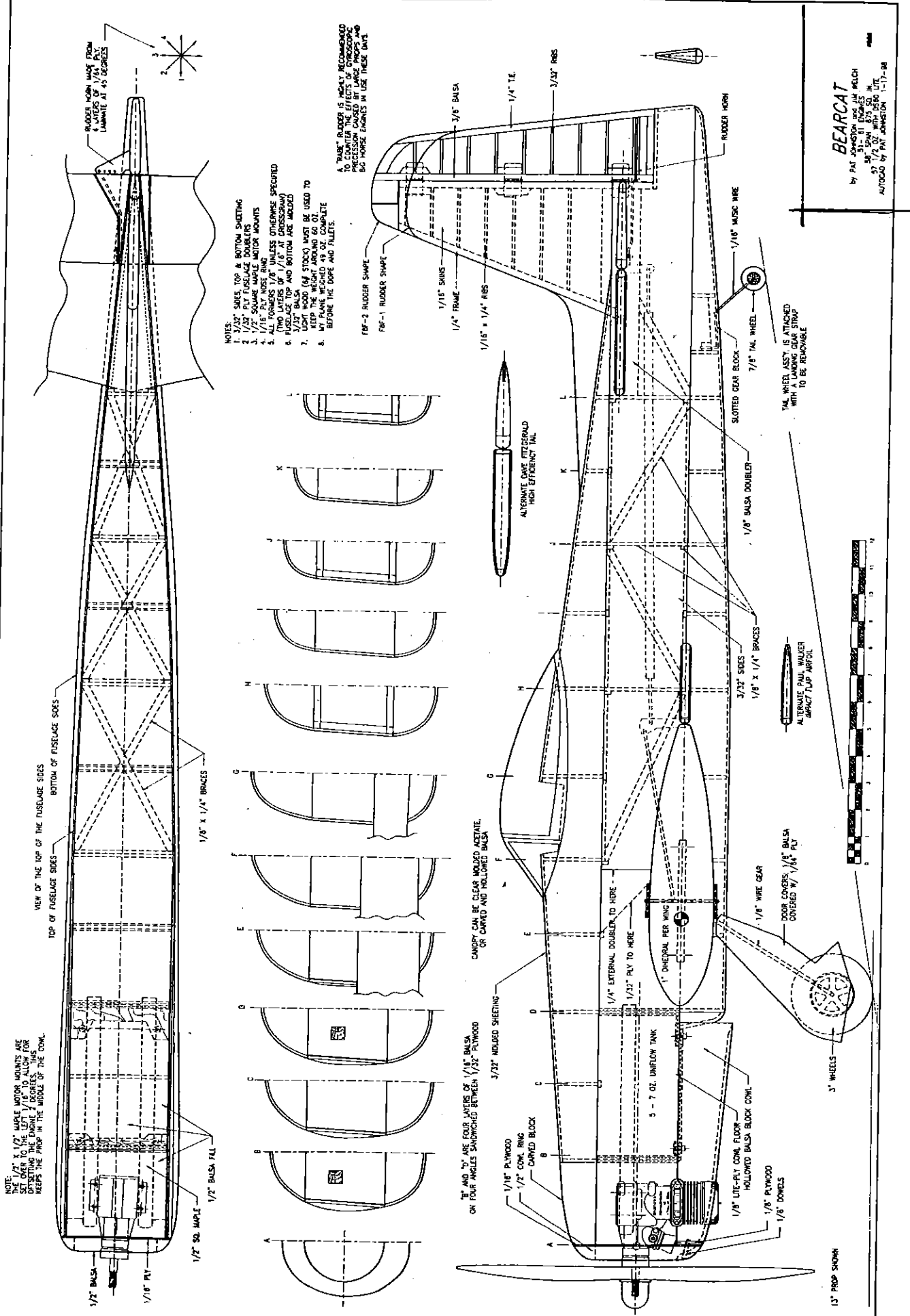
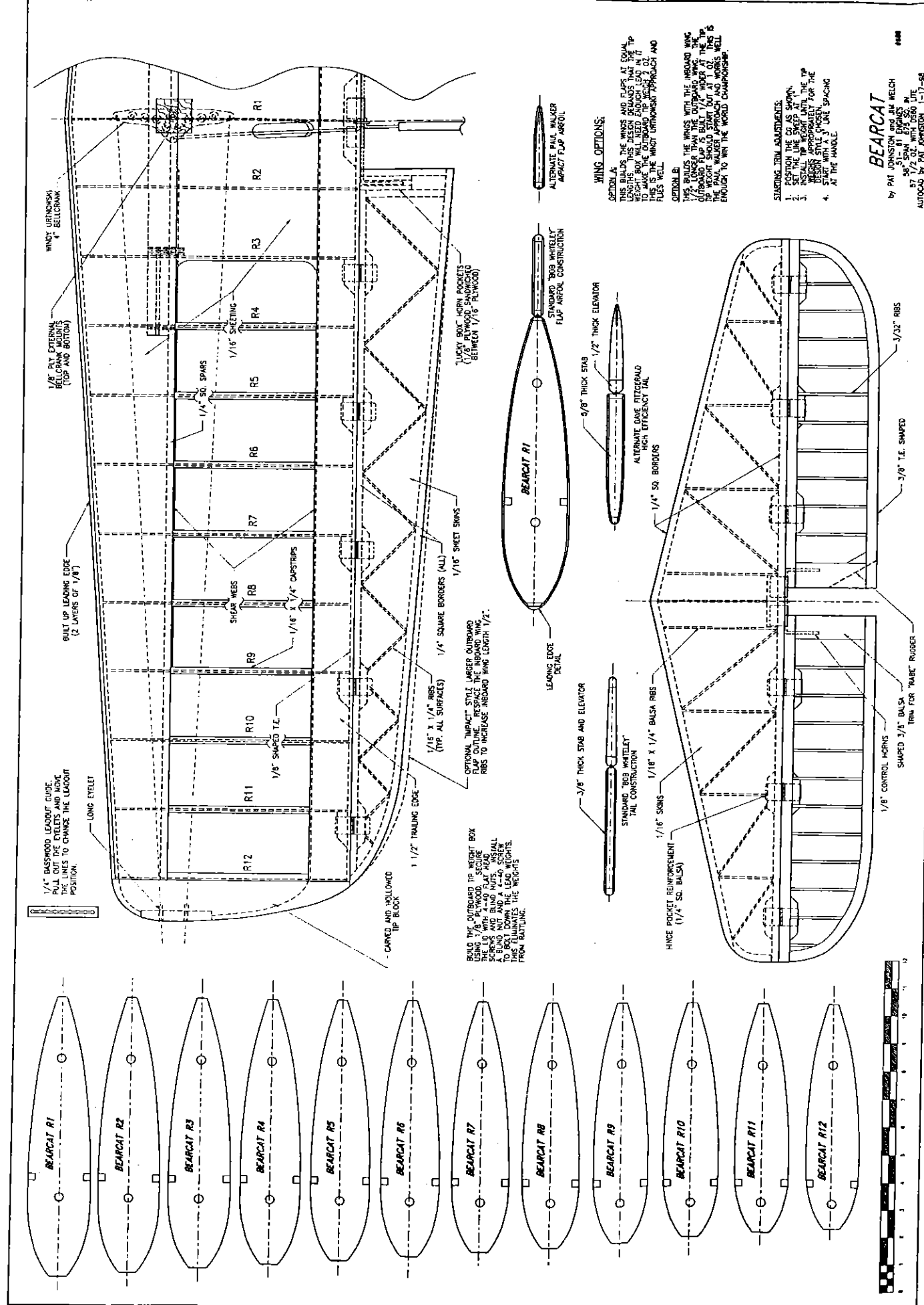
ADJUSTABLE LEADOUT DETAIL & TEMPLATE

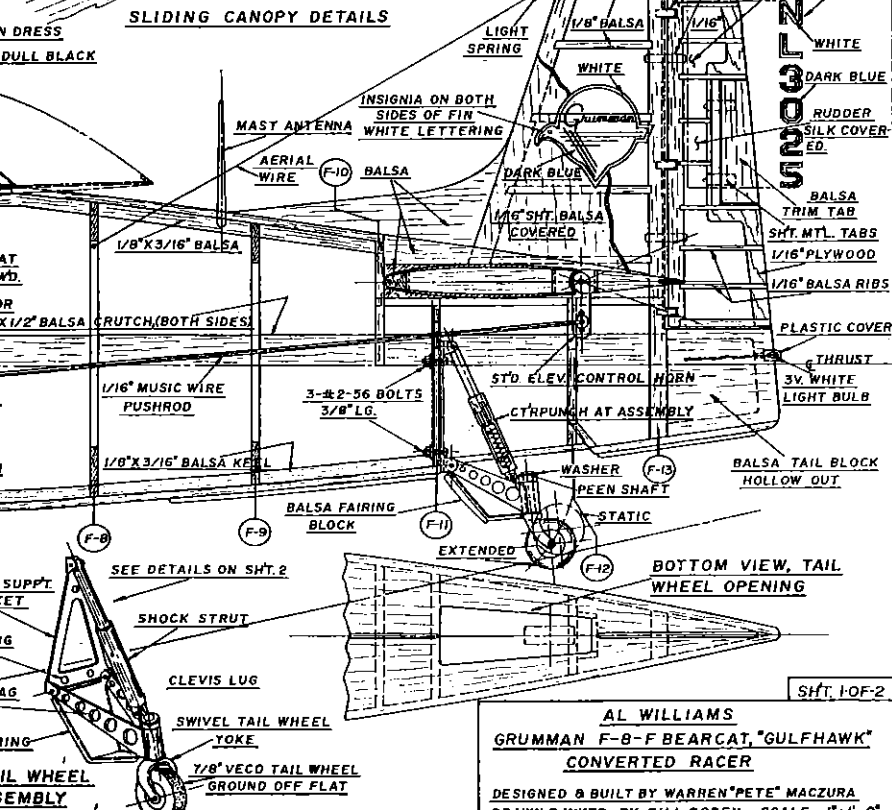
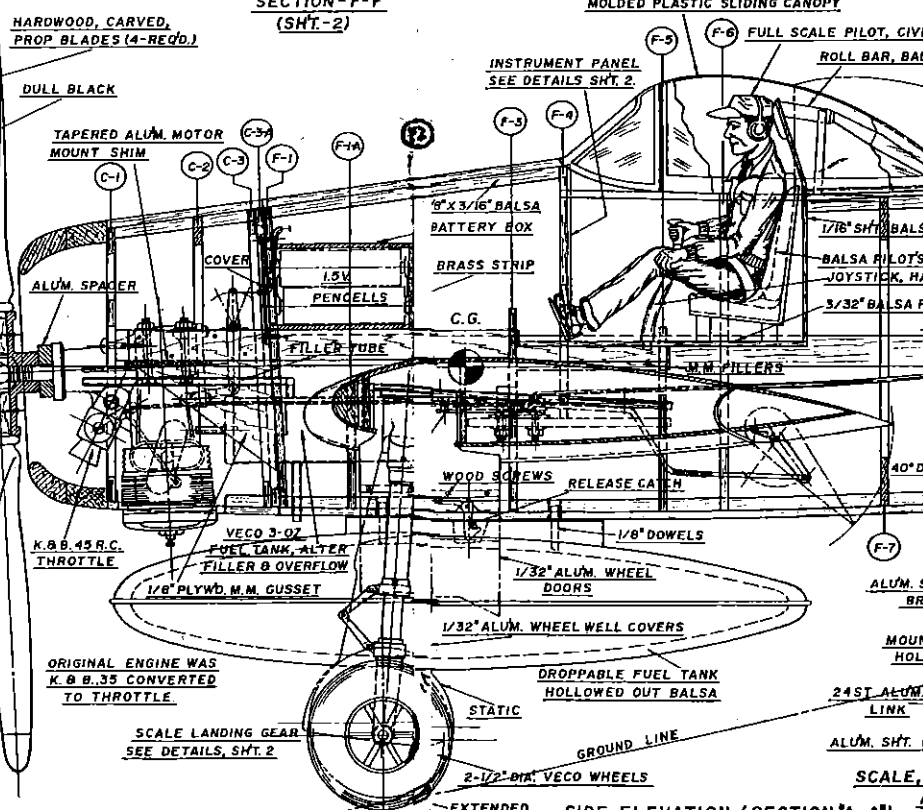
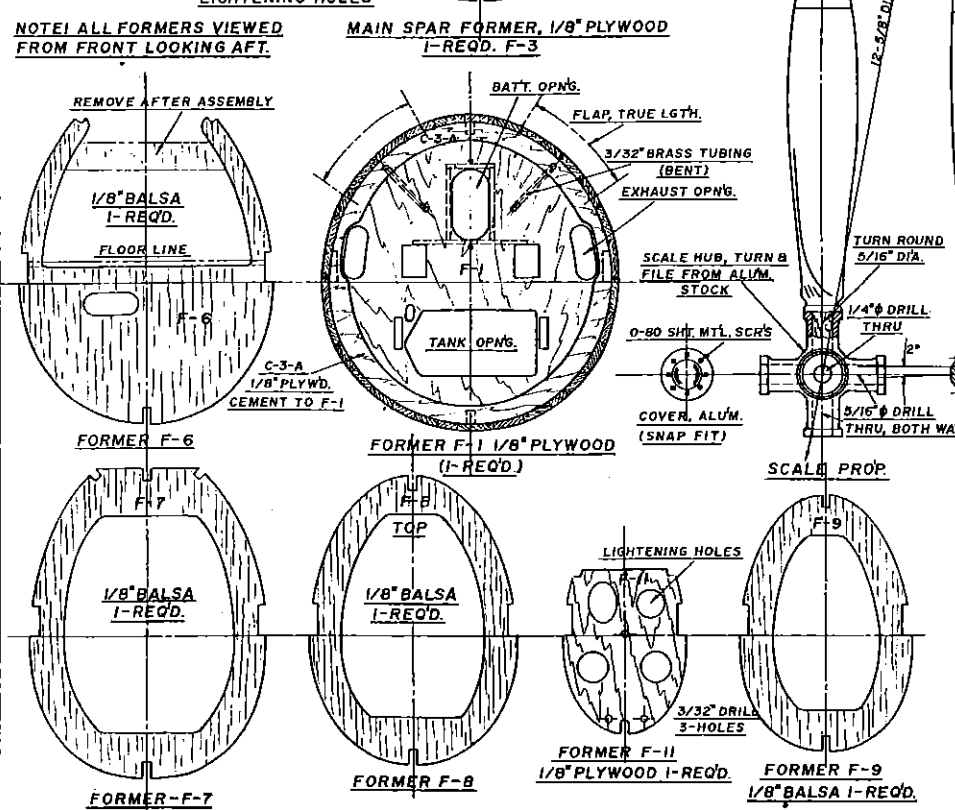
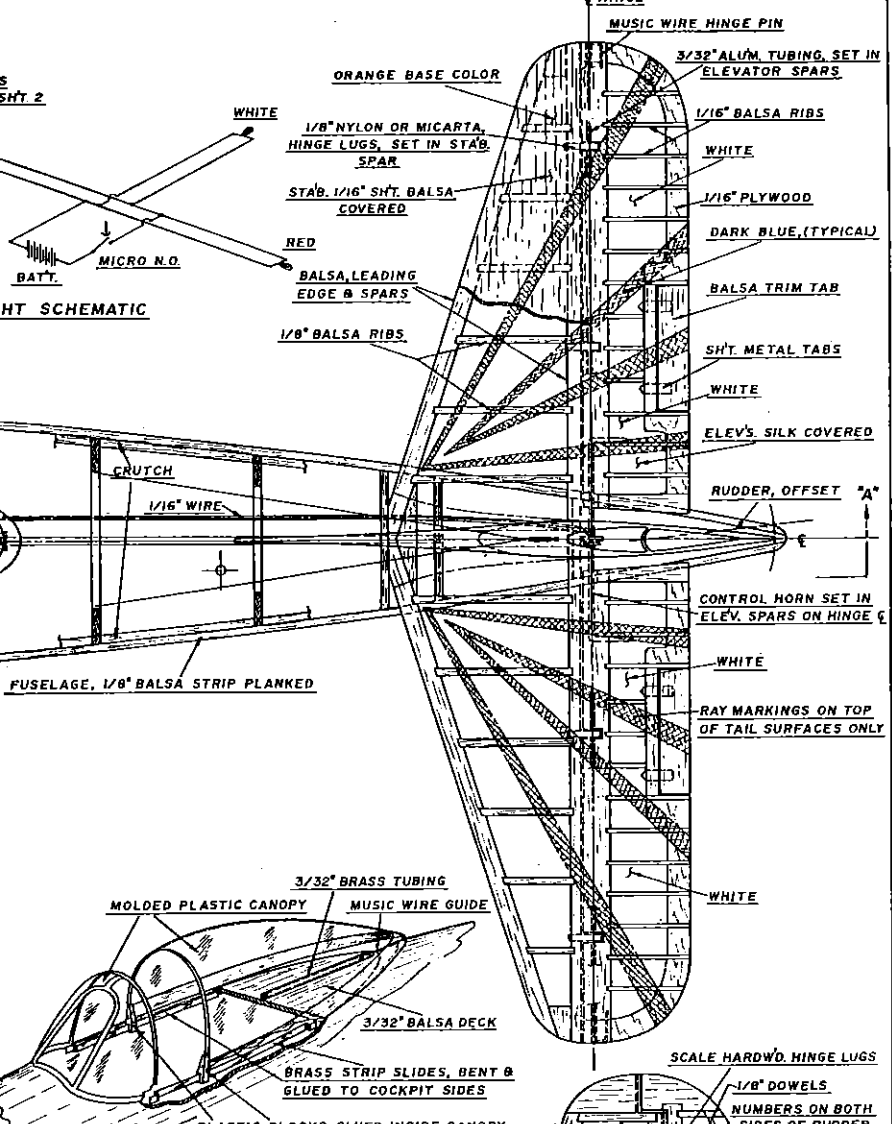
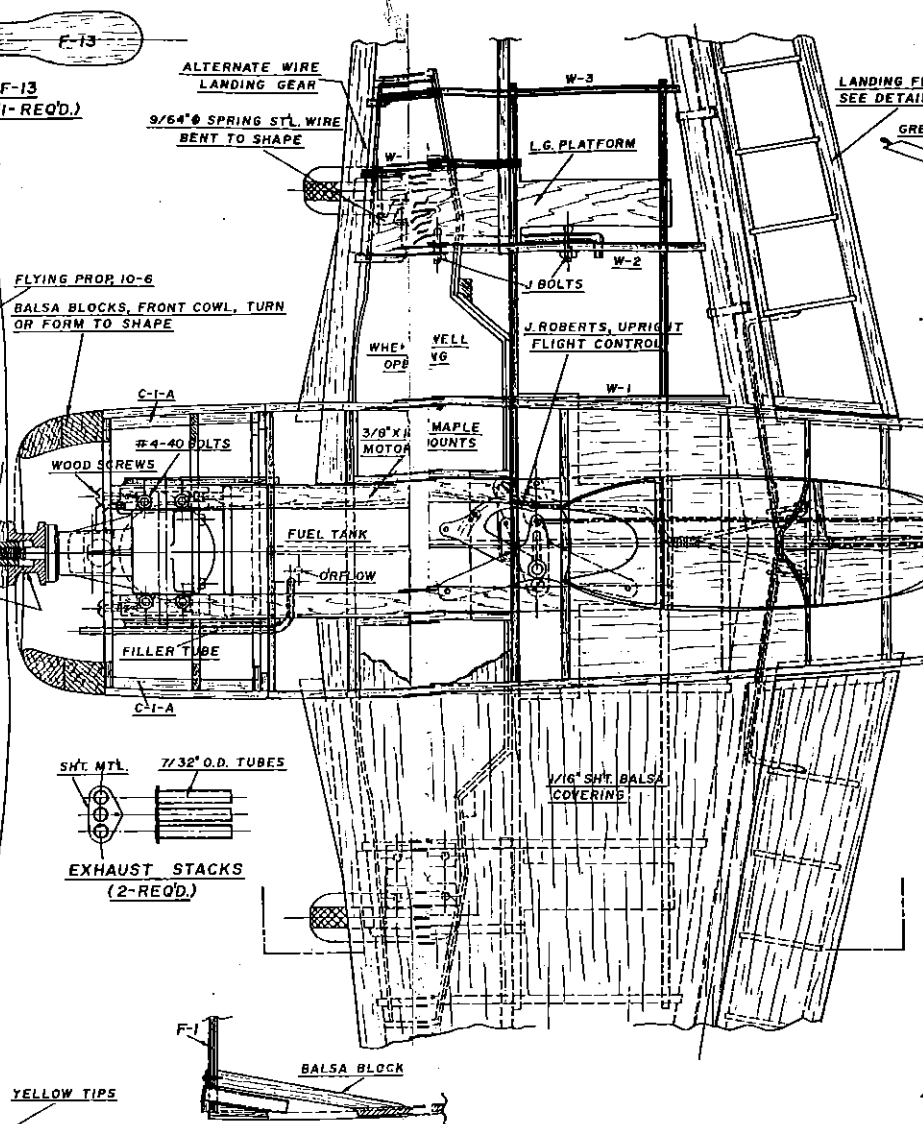
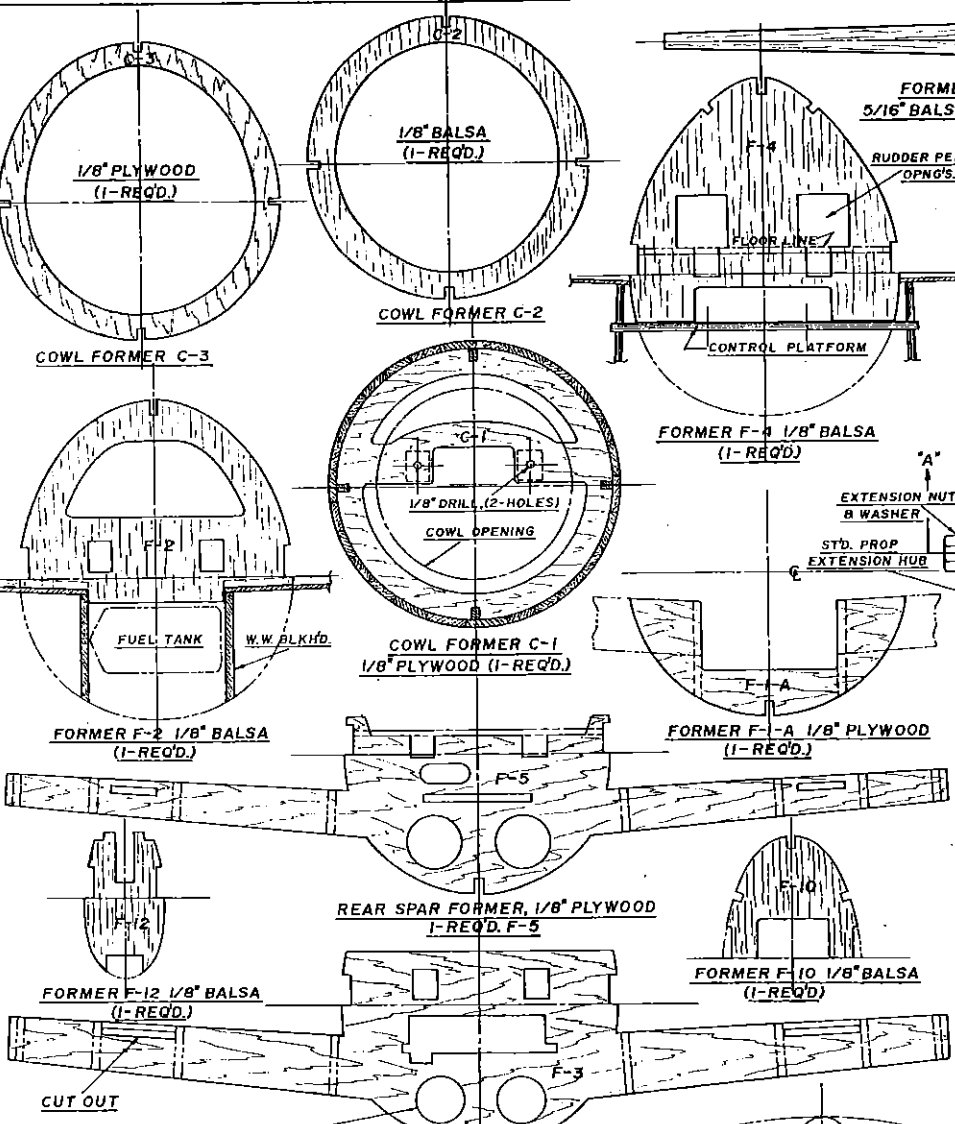
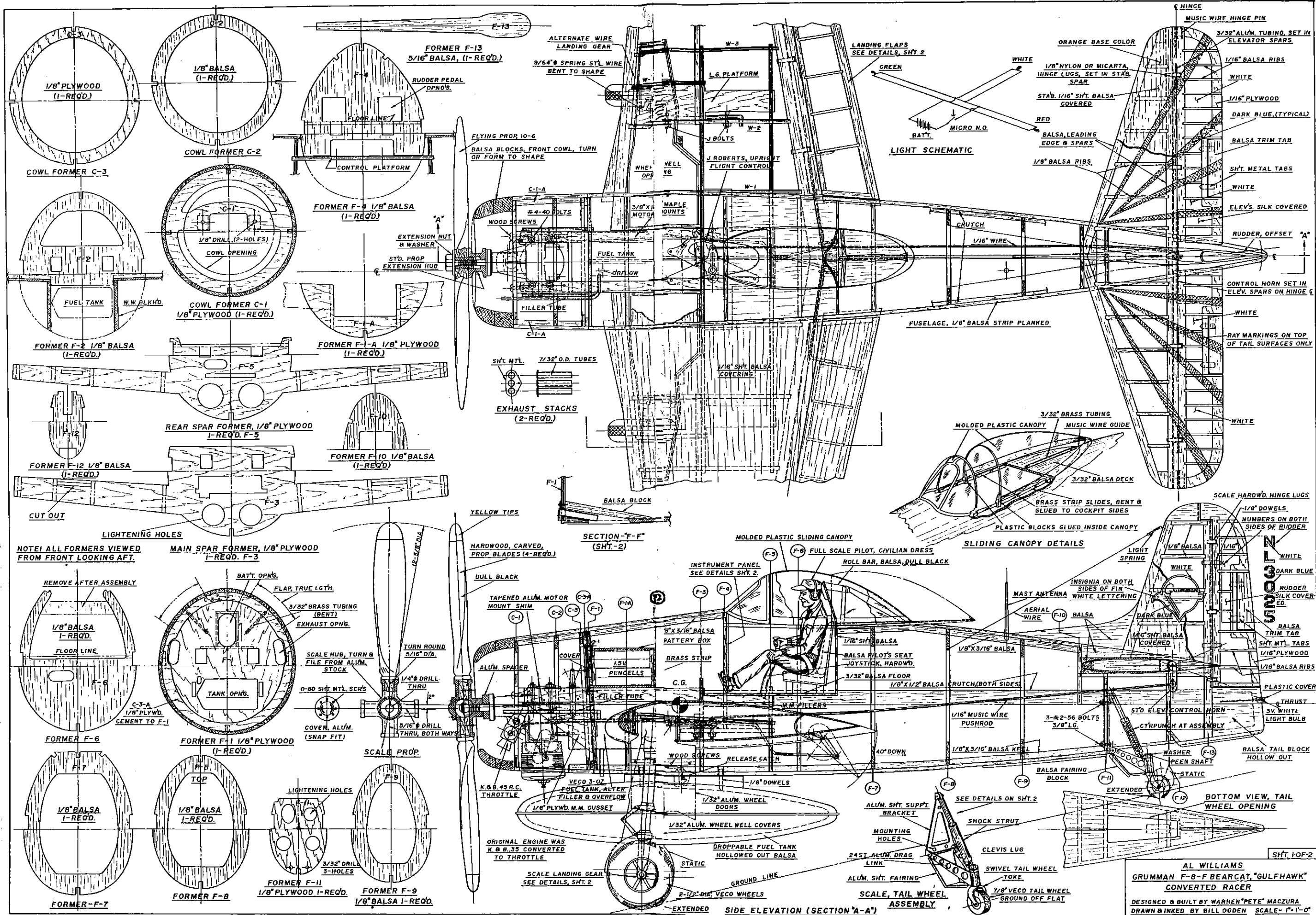


NOTE:
FOR ENGINE OFF-SET IF DESIRED. MOVE ENGINE MOUNT & TK. 3/16" INBOARD ON BULKHEADS 'B' & 'C'. THIS WILL ALLOW 2" OFF-SET WITH PROP. SHAFT ON FUSE. C.

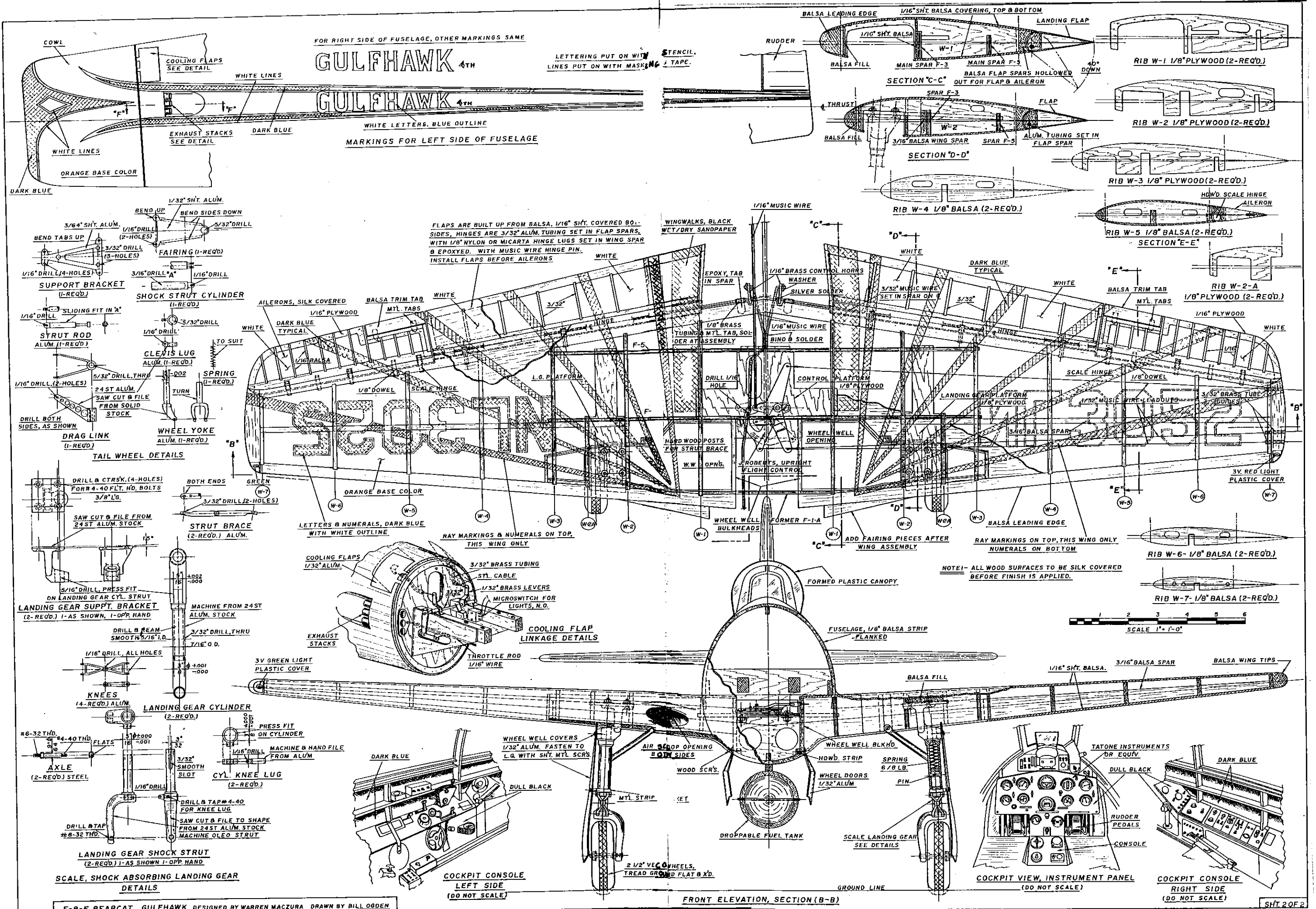
4- SIG 2-56 X 1/2" FLAT HEAD SCREWS

7/8" PERFECT TAILWHEEL GROUND FLAT TO 3/4"





AL WILLIAMS
 GRUMMAN F-8-F BEARCAT, "GULFHAWK"
 CONVERTED RACER
 DESIGNED & BUILT BY WARREN "PETE" MACZURA
 DRAWN & INKED BY BILL ODGEN SCALE-1"=1'-0"



FOR RIGHT SIDE OF FUSELAGE, OTHER MARKINGS SAME

GULFHAWK 4TH

LETTERING PUT ON WITH STENCIL.
LINES PUT ON WITH MASKING TAPE.

GULFHAWK 4TH

WHITE LETTERS, BLUE OUTLINE

MARKINGS FOR LEFT SIDE OF FUSELAGE

FLAPS ARE BUILT UP FROM Balsa, 1/16" SHY. COVERED BOTH SIDES, HINGES ARE 3/32" ALUM. TUBING SET IN FLAP SPARS, WITH 1/8" NYLON OR MICARTA HINGE LUGS SET IN WING SPAR & EPOXYED. WITH MUSIC WIRE HINGE PIN. INSTALL FLAPS BEFORE AILERONS

NOTE! - ALL WOOD SURFACES TO BE SILK COVERED BEFORE FINISH IS APPLIED.